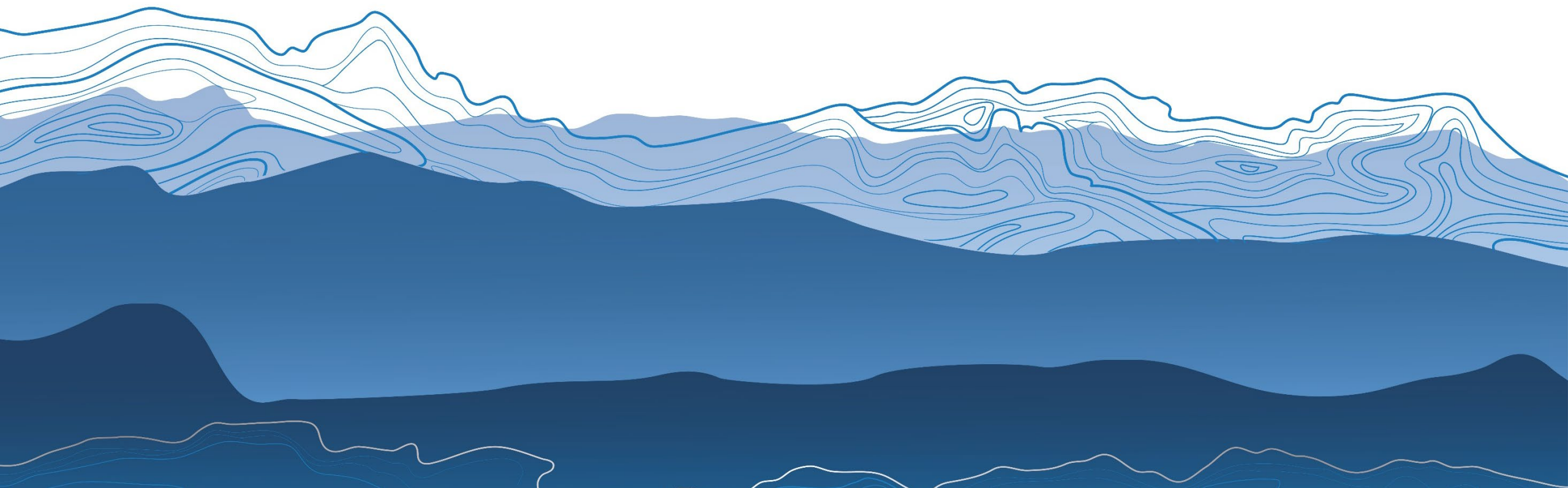


ЕНИСЕЙСКАЯ
СИБИРЬ
YENISEY
SIBERIA

КРАСНОЯРСКИЙ КРАЙ ХАКАСИЯ ТЫВА
KRASNOYARSK REGION KHAKASSIA TYVA

TIMBER INDUSTRY OFFERS



ЕНИСЕЙСКАЯ СИБИРЬ YENISEY SIBERIA

КРАСНОЯРСКИЙ КРАЙ ХАКАСИЯ ТЫВА
KRASNOYARSK REGION KHAKASSIA TYVA



SIBERIAN FOREST CHEMICAL PLANT



SIBERIAN FOREST CHEMICAL PLANT

The project involves the use of the capacities of the functioning plant for the production of deeply processed chemical products for organizing its own production of a related or other profile.

SPECIALIZATION OF EXISTING PRODUCTION

- pine oil
- terpeneol
- cable rosin
- granulated rosin and rosin esters

OWNER

Siberian Wood Chemical Plant, AO (part of the structure of the Biochemical Holding - Orgkhim).

LOCATION

Krasnoyarsk Territory, Lesosibirsk city.



Yenisei river

PROJECT GEOGRAPHY

Angara river

Lesosibirsk

Ckarabula village

LOCATION

Lesosibirsk city:
to the railway station - 0.5 km;
to the center of Lesosibirsk - 10 km;
to Krasnoyarsk - 300 km.



58.15827731659081, 92.57738247457917

04K-044

Krasnoyarsk

Achinsk city

P-255

P-257

P-255

PROJECT GEOGRAPHY



FREIGHT RAILWAY
STATION
water transshipment

Land plot

24:52:0010512:51

65 ha Land area

22 thousand sq. m Production storage area

5 Railway dead-end track

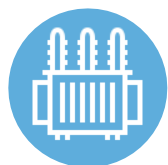
1630 meters Total length of railway tracks on the site

LESOSIBIRSKY
RIVER PORT



ENGINEERING INFRASTRUCTURE

ENERGY SUPPLY HEAT SUPPLY



Electrical substation

26 MW installed
1.95 MW permitted



Coal boiler house

3 boilers
3.87 Gcal / h



Electric boiler-house

3 boilers
1.5 MW

WATER SUPPLY WATER DISPOSAL



Water disposal

500 thousand cubic
meters m / year



Water intake

1800 thousand cubic meters
m / year



Wastewater treatment plant

47 thousand cubic meters m / year



POTENTIAL INDUSTRIES FOR LOCATION



TIMBER CUTTING / WOOD PROCESSING PRODUCTION

- Access to all necessary engineering infrastructure, including the city power substation and additional power supplies on the industrial complex territory.
- The proximity of the resource base: by 2028 it is planned to provide more than 1 million hectares of forest on the territory of the Yenisei forestry where there is production site for stock-piling of timber.



CHEMICAL ORGANIC PRODUCTION

- Specialized production complex in a high degree of readiness for the start of work.
- High energy efficiency of the existing production.



LOGISTIC WAREHOUSE COMPLEX

- The possibility of buying out land plots and real estate properties by right of ownership.
- Favorable location in relation to transport routes: the ability to build a multimodal logistic chain.



PROJECT PARTICIPATION FORMS



PURCHASE OR RENT OF LAND PLOTS

for the implementation of own investment projects and the construction of a new production.



PURCHASE OR RENT OF PRODUCTION AREAS

on the territory of the plant for the implementation of own investment projects, including for the organization of production, warehouse complexes, administrative areas.



BUYING OUT THE WHOLE PROPERTY COMPLEX

of operating plant to carry out own activities.



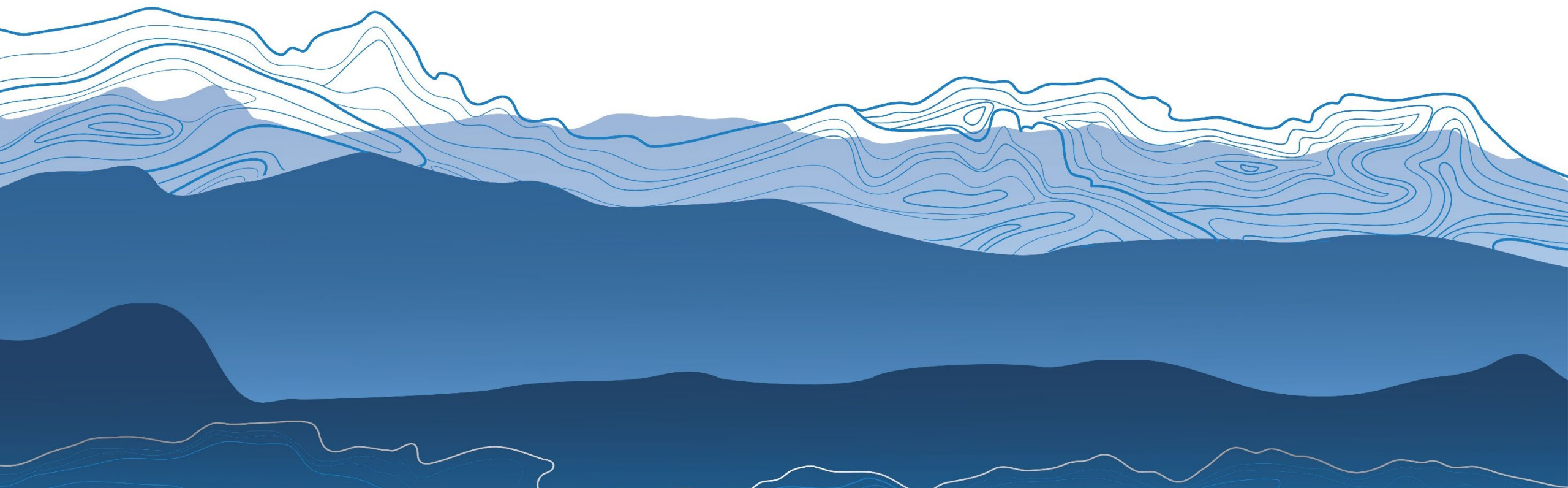
ЕНИСЕЙСКАЯ СИБИРЬ YENISEY SIBERIA

КРАСНОЯРСКИЙ КРАЙ ХАКАСИЯ ТЫВА
KRASNOYARSK REGION KHAKASSIA TYVA



KLM GROUP

Offer: Location of production at one of the company sites, including the supply of raw materials, or the sale of one of the sites





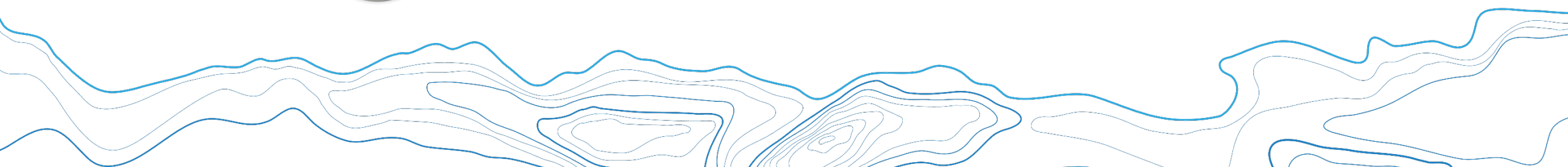
ABOUT KLM GROUP

During its more than a 15-year history, the company has become one of the largest in the Krasnoyarsk region - one of the richest forest region in Russia.

Currently the group consists of logging and timber processing enterprises, as well as the distributional companies.

Products are sold not only domestically but also in Europe, China, Japan, Egypt, Turkey and other. An important stage of development of the "KLM" Group was the acquisition in 2008 of LTD "KoDOK".

It resulted in increase in total production capacity up to 310 thousand m³ of lumber per year.

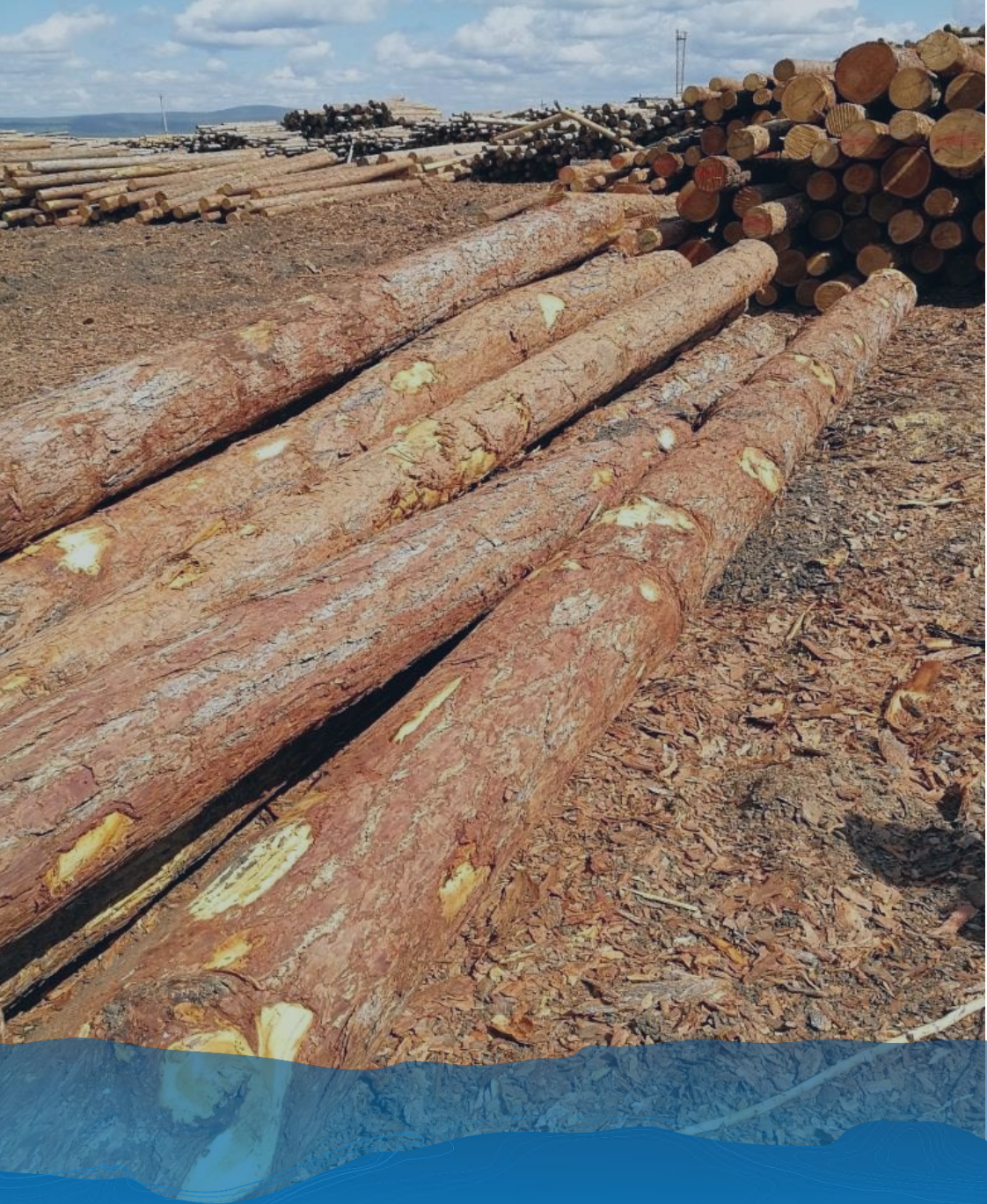




TIMBER FUND

The KLM Group has a long-term lease (up to 49 years) in the Turukhansk, Kezhemsk and Boguchansk districts of the Krasnoyarsk Territory with a forest fund with a rated wood cutting area in the amount of 185,9 thousand m³ per year.

The highest quality Angara pine and Siberian larch are dominated in the KLM Group forest fund.



TIMBER STOCKPILING

The own timber stockpiling is **170 thousand m³** with a root mass (120 - 130 thousand m³ in saw log) per year.

According to the development plan the enterprise is gradually increasing harvesting volumes to the full size of the rated wood cutting.

Not to utilize completely forest resources are located in the Bor forestry and logistically can provide processing in Krasnoyarsk.



INDUSTRIAL CAPACITY

Krasnoyarsk city

Sawmill woodworking plant in Krasnoyarsk has processing capacity up to **200 000 m³ of round wood per year**, with drying chambers and woodworking workshops with a capacity for glued products up to **36 000 m³ per year**.

It is possible to release products of lower processing stages lumber and planed lumber.

WOODWORKING INDUSTRY

Krasnoyarsk city



Production of planed and glued wood products and has the following production facilities:

- glued furniture board - up to 2 400 m³ per year
- glued window beams - up to 12 000 m³ per year
- glued construction timber - up to 36 000 m³ per year with the possibility of manufacturing fully complete wooden houses from glued laminated timber with a total area of up to 100 000 m² per year

PRODUCTION CAPACITY

Kodinsk city



Sawmill woodworking plant in Kodinsk

The capacity plant of wood processing is 150 000 m³ of raw materials per year, production is 70 - 75 thousand m³ of dried lumber per year.

The KLM Group owns 50 % in the plant project for the production of wood fuel pellets. Production volume is 1 000 tons of pellets per month. It is planned to increase the capacity to 2 000 tons per month.

PRODUCTION CAPACITY

CHUNOYAR CONTAINER TERMINAL



In December 2017 the own container terminal started to work at the Chunoyar station. The terminal's capacity is currently 1200 containers per month.

In addition to the shipment of own production lumber, the terminal serves large sawmills: Priangarsky Timber Industry Complex (PLPK), Kraslesinvest, etc.

FUTURE PLANS

ORGANIZATION OF LOGGING ACTIVITIES IN KEZHEMSKY DISTRICT OF KRASNOYARSK

Purpose: The development of logging up to 300 thousand cubic meters per year.

Products:

lumber 300 thousand cubic meters per year

Necessary investments:
5 MUSD

Approximate volume of sales:
up to 12 MUSD per year

CREATING A WOODWORKING COMPLEX IN KANSK. INVOLVES THE CONSTRUCTION OF TIMBER WITH A CAPACITY TO PRODUCE LAMINATED PRODUCTS OUTPUT

Necessary investments:
1 150 MUSD

Approximate volume of sales:
up to 12 MUSD per year

THE ORGANIZATION OF PROCESSING OF WOOD WASTE IN KODINSKY

Objective: To create a shop for production of fuel pellets (pellets).

Products:

fuel granules (pellets)
30 thousand tons per year

Necessary investments:
3 MUSD

Approximate volume of sales:
up to 3,8 MUSD per year

The background image shows a vast industrial facility, likely a wood mill. On the left, there are numerous tall stacks of light-colored wooden planks or boards. In the center and right, there is a complex system of green and orange machinery, including conveyor belts and rollers, used for processing wood. A yellow forklift is visible in the lower right foreground, carrying a stack of lumber. The ceiling is high with exposed pipes and industrial lighting. The overall scene depicts a large-scale wood manufacturing operation.

THE SOSNOVOBORSKY INDUSTRIAL PARK

BECOME A RESIDENT OF THE INDUSTRIAL
PARK AND OPEN A WOODWORKING
PRODUCTION

BENEFITS FOR RESIDENTS



CENTRALIZED SUPPLY OF TIMBER RESOURCES

Estimated volume of forest resources - up to 1,000 thousand m³ per year, including:

- softwood (birch, aspen) – 60-70%
- coniferous wood (pine, spruce, cedar, larch, fir) - 20-30%

Estimated cost of forest resources *:

- softwood (birch, aspen) - 35– 47 dollars / m³
- coniferous wood (cedar, larch, fir) - 58 dollars / m³
- coniferous wood (pine, spruce) - 62 dollars / m³



REDUCED RATE FOR RENT OF PREMISES

Estimated rate for rent of premises*:

- cold rooms (production, warehouses) – 2 dollars / m² per month
- warm rooms (production, warehouses) – 3,3 dollars / m² per month
- warm rooms (offices) – 8,3 dollars / m² per month

Possible rate for rent of premises for small and medium-sized businesses*:

- cold rooms (production, warehouses) – 1,4 dollars / m² per month
- warm rooms (production, warehouses) – 2,5 dollars / m² per month
- warm rooms (offices) – 6,2 dollars / m² per month



COMMON USE CENTER

Certification, standardization and testing center:

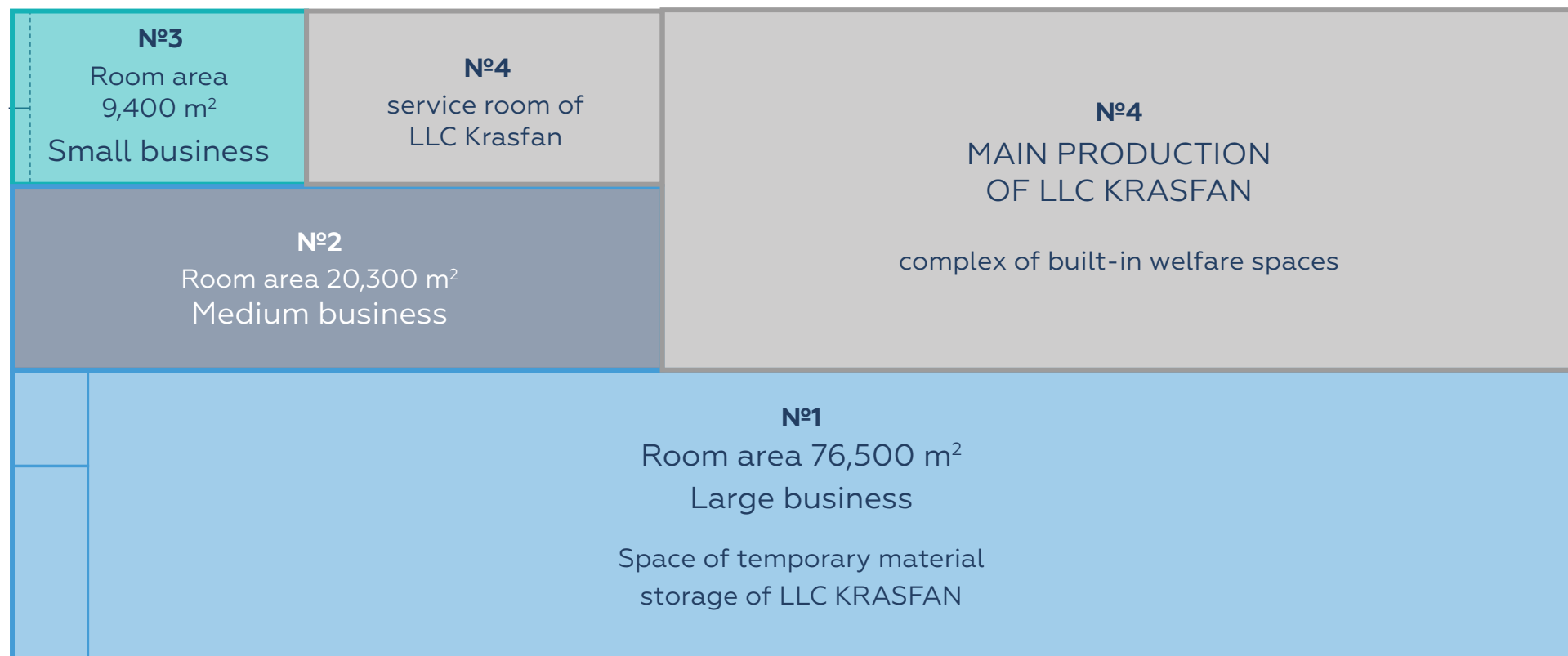
- testing of building and furniture materials and structures
- certification and testing of furniture and joinery
- certification and testing of biofuels and other products

Support equipment for collective use:

- equipment for lamination and colouring
- expensive carpenter's and joiner's tool
- repair (milling, turning, drilling other equipment)

*in 2020 prices, including VAT

INDUSTRIAL PREMISES



FUNCTIONAL AREA

- №1** premises for large business, warm and cold warehouses
- №2** premises for medium business, warm and cold warehouses
- №3** premises for production and offices of medium business
- №4** Production and utility space LLC KRASFAN

CURRENT TENANTS

- LLC «Paint and varnish plant» Krasemal»
(workshop for the production of paints and varnishes)
- LLC «EnergostroyMontazh» (production of sandwich panels)
- LLC «YugSib» (production of sleepers and packing boards)
- LLC «Abaka»

POTENTIAL RESIDENTS. LARGE BUSINESS



GLUED WOODEN STRUCTURES

Rated capacity – **150** thousand m³ / year
Investment volume – **500** million rubles
Personnel – **120** new work place
Required area – **9** thousand m²



ORIENTED STRAND BOARD (OSB) PRODUCTION

Rated capacity – **100** thousand m³/ year
Investment volume – **1 116** million rubles
Personnel – **100** new work place
Required area – **10** thousand m²



MAINTENANCE SHOP

Rated capacity – **2 500** pcs / year
Investment volume – **500** million rubles
Personnel – **80** new work place
Required area – **7** thousand m²



PREFABRICATED AND BLOCK-MODULE HOUSES

Rated capacity – **200** thousand m³/ year
Investment volume – **401** million rubles
Personnel – **153** new work place
Required area – **10** thousand m²

LLC KRASFAN



- LLC KRASFAN was founded in 2016.
- The company attracted investors and acquired the former Yenisei Plywood Mill in order to restore plywood production.
- The company initiates and participates in the project of the industrial park “Sosnovoborsk. Technodrev – 2020”.
- Today LLC KRASFAN manufactures high quality plywood from softwood and hardwood.
- Finished products are in demand all over the world, particularly in Europe, It implemented in Russia and the CIS countries.