

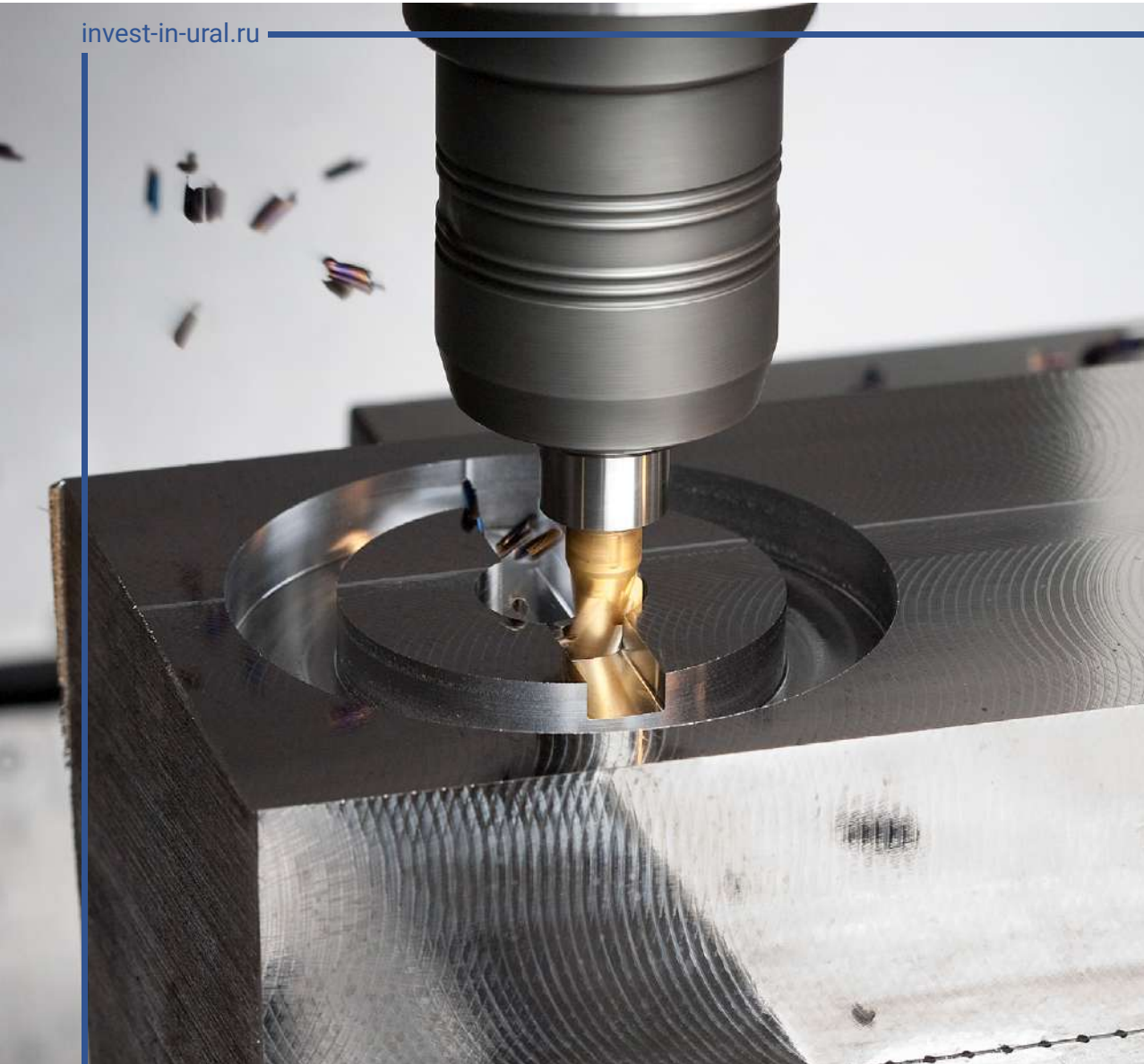
INVEST IN URAL

INVESTMENT POTENTIAL OF THE SVERDLOVSK REGION

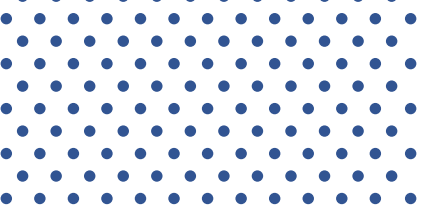


**INVESTMENT
PROMOTION
AGENCY**

of the Sverdlovsk Region



CONTENTS



01 _____

General Information on the Region 4

02 _____

Transport infrastructure of the Region 8

03 _____

Human resources and scientific Potential 10

04 _____

Key investment areas 12

05 _____

Services for investors 14

06 _____

The advantages of localization in the Sverdlovsk region 16

07 _____

Investment Infrasrtucture 18

08 _____

State support measures 20

09 _____

The Region of successful investment projects 22

10 _____

Investment potential of the Sverdlovsk region 24



GENERAL
INFORMATION
ON THE REGION

01



City center
of Ekaterinburg, the capital
of the Sverdlovsk region



POINT OF GROWTH IN THE HEART OF RUSSIA

EUR 30.0 million

GROSS REGIONAL PRODUCT

> 4,3 mln people

POPULATION

Ekaterinburg city

CENTER OF THE REGION

TOP 10

IN THE INTEGRAL
RATING OF RUSSIAN
REGIONS

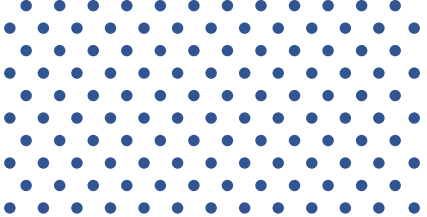
1B

INVESTMENT
RATING

HIGH
POTENTIAL
MODERATE RISK

THE SVERDLOVSK REGION IS A LARGE ECONOMICALLY DEVELOPED
REGION WITH A HIGH LEVEL OF BUSINESS, CULTURAL
AND SOCIAL ACTIVITY





THE SVERDLOVSK REGION IS A KEY INDUSTRIAL REGION OF RUSSIA

THE ECONOMY OF THE REGION IS BASED
ON MINING, METALLURGICAL AND MACHINEBUILDING
INDUSTRIES. THE REGION IS RICH WITH NATURAL
RESOURCES, HAS A DIVERSIFIED INDUSTRIAL COMPLEX
AND ALSO SIGNIFICANT SCIENTIFIC AND
HUMAN POTENTIAL

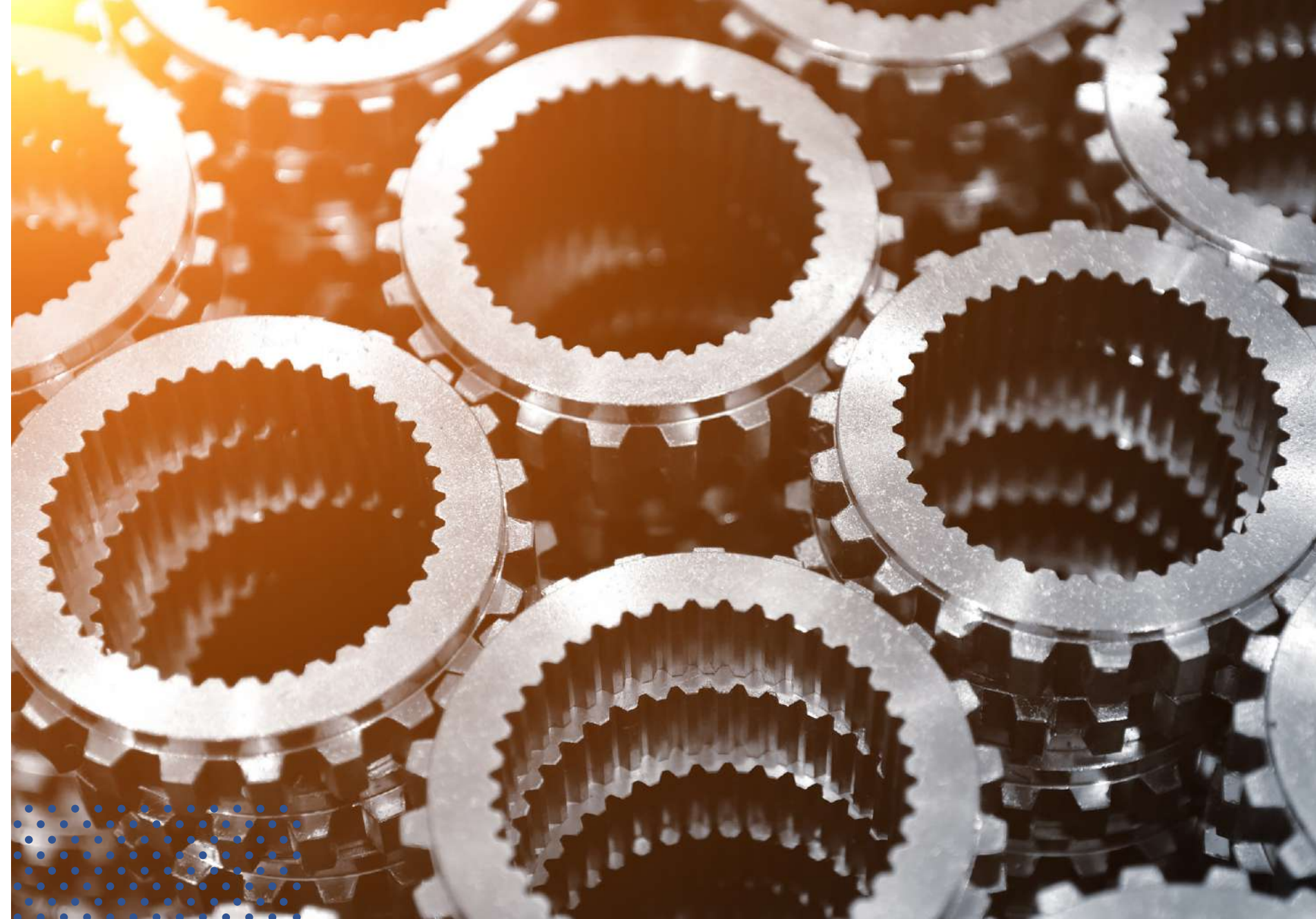
THE LEVEL OF INDUSTRIAL PRODUCTION CONSOLIDATION
IS 4 TIMES HIGHER THAN THE NATIONAL LEVEL

TOP 10

AMONG RUSSIAN
REGIONS IN TERMS
OF INDUSTRIAL
PRODUCTION

about **417**
thousand people

WORK IN INDUSTRY, WHICH
IS ABOUT 25% OF THE TOTAL
NUMBER OF EMPLOYEES IN
THE ORGANIZATIONS OF
THE SVERDLOVSK REGION





Koltsovo International Airport

AIR TRANSPORT

24,5 thousand tons
cargo turnover

67
russian and international airlines

110
destinations

**Koltsovo International Airport
is the BEST REGIONAL AIRPORT
IN RUSSIA AND CIS COUNTRIES IN 2019**

In 2019 and 2020, Koltsovo became the laureate
of the 5th national award Air Gates of Russia in
the category of the Best Air Freight Infrastructure



RAILWAY NETWORK

207 mln tons
cargo turnover

9,8 thousand km
railway network



Old railway station building in Ekaterinburg (1878)



ROAD NETWORK

30,5 thousand km
road network

32,5 mln tons
cargo turnover

more than **1,5** mln m²
of high-quality
warehouse space



**THE SVERDLOVSK REGION IS ONE
OF THE KEY LOGISTICS HUBS
IN RUSSIA WITH MODERN
INFRASTRUCTURE, PROVIDING
ACCESS TO THE MARKETS OF
THE EUROPEAN AND ASIAN PARTS
OF THE COUNTRY**

HUMAN
RESOURCES AND
SCIENTIFIC
POTENTIAL

03

2.2 million

WORKFORCE

PEOPLE

THE SVERDLOVSK REGION –
IS A HOMELAND OF THE
«URAL ENGINEERING SCHOOL»

1th place

IN RUSSIA BY
THE NUMBER OF
PROFESSIONAL
EDUCATIONAL
ORGANIZATIONS

5th place

PLACE AMONG RUSSIAN
REGIONS BY THE NUMBER
OF CREATED ADVANCED
MANUFACTURING
TECHNOLOGIES

5th place

BY THE NUMBER
OF UNIVERSITIES

MORE THAN

819

UNIQUE
TECHNOLOGIES HAVE
BEEN CREATED AND
PATENTED IN THE LAST
15 YEARS

THE REGION OFFERS INVESTORS
BOTH EXPERIENCED PERSONNEL AND
SPECIAL TRAINING PROGRAMS
IN COLLABORATION WITH THE MAIN
UNIVERSITIES OF THE URALS

THERE ARE

250

ENGINEERING
SPECIALTIES

IN 23

UNIVERSITIES

R&D OF
THE SVERDLOVSK
REGION

109
institutions

including
35
industrial
enterprises

more than

2 500

Doctors and Candidates
of science

MECHANICAL
ENGINEERING



PRODUCTS AND
SERVICES FOR
OIL AND GAS
INDUSTRY



CHEMICAL
INDUSTRY



PRODUCTION OF
CONSTRUCTION
MATERIALS



LOGISTICS



FOREST
INDUSTRY



PRODUCTION
OF MEDICAL
EQUIPMENT AND
MATERIALS



DISCOVERING NEW,
CREATING TRADITIONS

QUALITY SERVICES FOR INVESTORS

**INVESTMENT PROMOTION AGENCY
OF THE SVERDLOVSK REGION PROVIDES
ONE-STOP-SHOP SERVICES FOR INVESTORS
AT EACH STAGE OF AN INVESTMENT PROJECT.
ALL THE SERVICES ARE PROVIDED FREE
OF CHARGE**

PLANNING

- Provision of information about the market and business environment
- Presentation of investment sites of the Sverdlovsk region
- Informing about investment project support measures
- Preparation of investment offers

PREPARATION

- Selection of an investment site according to investor criteria
- Preparation of offers for structuring the project's financial model
- Preparation of offers for optimization of the project's implementation schedule

IMPLEMENTATION

- Assistance with obtaining support measures and addressing project finance issues
- Provision of information, advice and organizational support for administrative procedures
- Assistance with personnel matters

PROMOTION

- Establishing communication with local business communities
- Promoting projects in Russia and abroad
- Assistance with establishing multinational operations

BASIC FACTS

- 1 high industrial component in the economy of the Sverdlovsk region
- 2 availability of human and scientific resources
- 3 availability in the Sverdlovsk region of ready-made industrial infrastructure
- 4 accessible and transparent mechanisms of state support
- 5 historically strong technological basis in key service industries

BENEFITS FOR INVESTORS

- 1 reduced transportation costs, quick arrival of service engineers, delivery of equipment and spare parts
- 2 possibility to create experimental polygons and test benches for new technologies
- 3 reducing the duration of the investment phase of projects
- 4 start-up cost reduction
- 5 possibility of cooperation and outsourcing with existing enterprises





MECHANICAL ENGINEERING

- TITANIUM VALLEY
- BOGOSLOVSKY



INSTRUMENT ENGINEERING

- PRO-BUSINESS-PARK
- LESNOY
- EKAD YUZHNY
- NOVOURALSK



PRODUCTION OF MEDICAL EQUIPMENT AND MATERIALS

- TITANIUM VALLEY
- PRO-BUSINESS-PARK
- INDUSTRIAL PARK «MALACHITE BOX»
- EKAD YUZHNY



CHEMICAL INDUSTRY

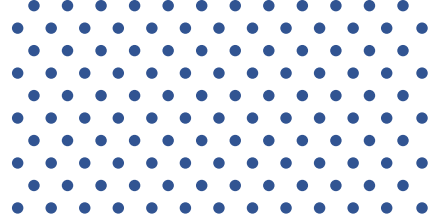
- TITANIUM VALLEY
- BOGOSLOVSKY
- EKAD YUZHNY
- TAGIL CHEMICAL PARK



CONSTRUCTION MATERIALS

- NOVOSVERDLOVSKY
- BOGOSLOVSKY
- PRO-BUSINESS-PARK

**INDUSTRIAL PARKS
AND SPECIAL
TERRITORIES OF THE
SVERDLOVSK REGION
ARE THE TOP CHOICE
FOR LOCALIZATION
OF INDUSTRIAL
CAPACITIES OF NEW
ENTERPRISES**



1

TAX INCENTIVES

- Territorial** (Territory of Advanced Social-Economic Development, Special Economic Zone)
- Project** (Priority Investment Project, Special Investment Contract)
- Industrial** (research and development, design and experimental, implementation activities)

2

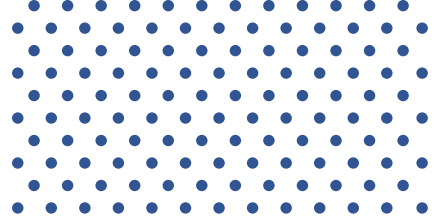
INDUSTRY-BASED FINANCIAL INCENTIVES

- Supporting programs for small and medium enterprise corporations** (investment loans, guarantees, subsidized lending)
- Programs of relevant ministries** (state guarantees of the Sverdlovsk Region, subsidies from the Federal and regional budgets)

3

NON-FINANCIAL INCENTIVES

- Investment project support on a «one-stop-shop» basis** (by the Investment Promotion Agency)



TAX INCENTIVES

SUPPORT MEASURES
FOR ANY PROJECT

	RUSSIAN FEDERATION	SVERDLOVSK REGION			
	BASE	PIP	SPIC	TASED	SEZ
INCOME TAX	20%	16,5%	13,5%	5%	2%
PROPERTY TAX	2,2%	0%	0%	0%	0%
LAND TAX	1,5%	0%	0%	0%	0%
INSURANCE PREMIUMS	30%	30%	30%	7,6%	30%

THE REGION OF
SUCCESSFUL
INVESTMENT
PROJECTS

09



PROJECT INVESTMENT COST

URAL BOEING
MANUFACTURING

5,5
billion
RUR



HILONG

1,2
billion
RUR



«Siemens AG»
& OOO «URAL
LOCOMOTIVES»

12
billion
RUR



PUMORI & OKUMA
COMPANY

4
billion
RUR



**MORE THAN 340 REPRESENTATIVE OFFICES
AND BRANCHES OF FOREIGN COMPANIES HAVE
ALREADY CHOSEN THE SVERDLOVSK REGION**



BRIC Summit 2009



WorldSkills Hi-Tech
Championship
(held on regular basis)



Russia-EU
Summit 2013



The World Summer
University Games 2023

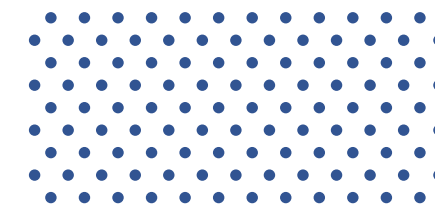


Global Manufacturing
and Industrialization
Summit - GMIS 2019



**EKATERINBURG IS THE №1 CITY FOR
BUSINESS AND IS STRATEGICALLY
IMPORTANT AS ONE OF THE LARGEST
FINANCIAL AND BUSINESS CENTERS
IN RUSSIA**

FIFA
World Cup 2018



**INVESTMENT
PROMOTION
AGENCY
OF THE SVERDLOVSK
REGION**

Ekaterinburg,
Boris Yeltsin St., 3,
5th floor, office 517

+7 (343) 311-52-80
welcome@ai-so.ru

invest-in-ural.ru

