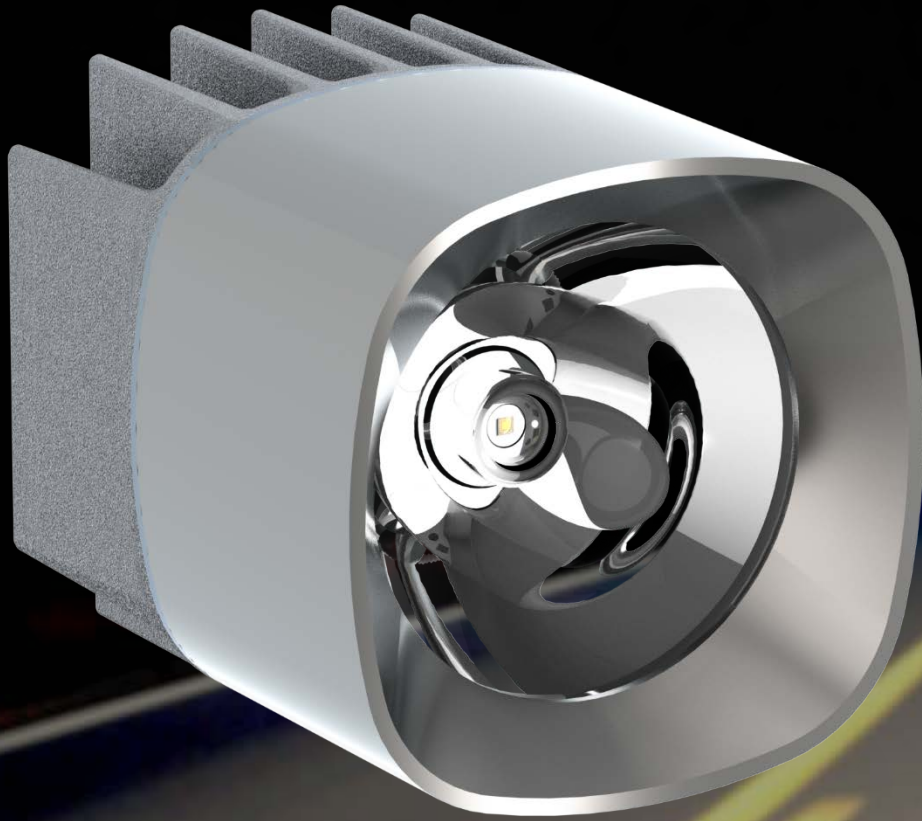


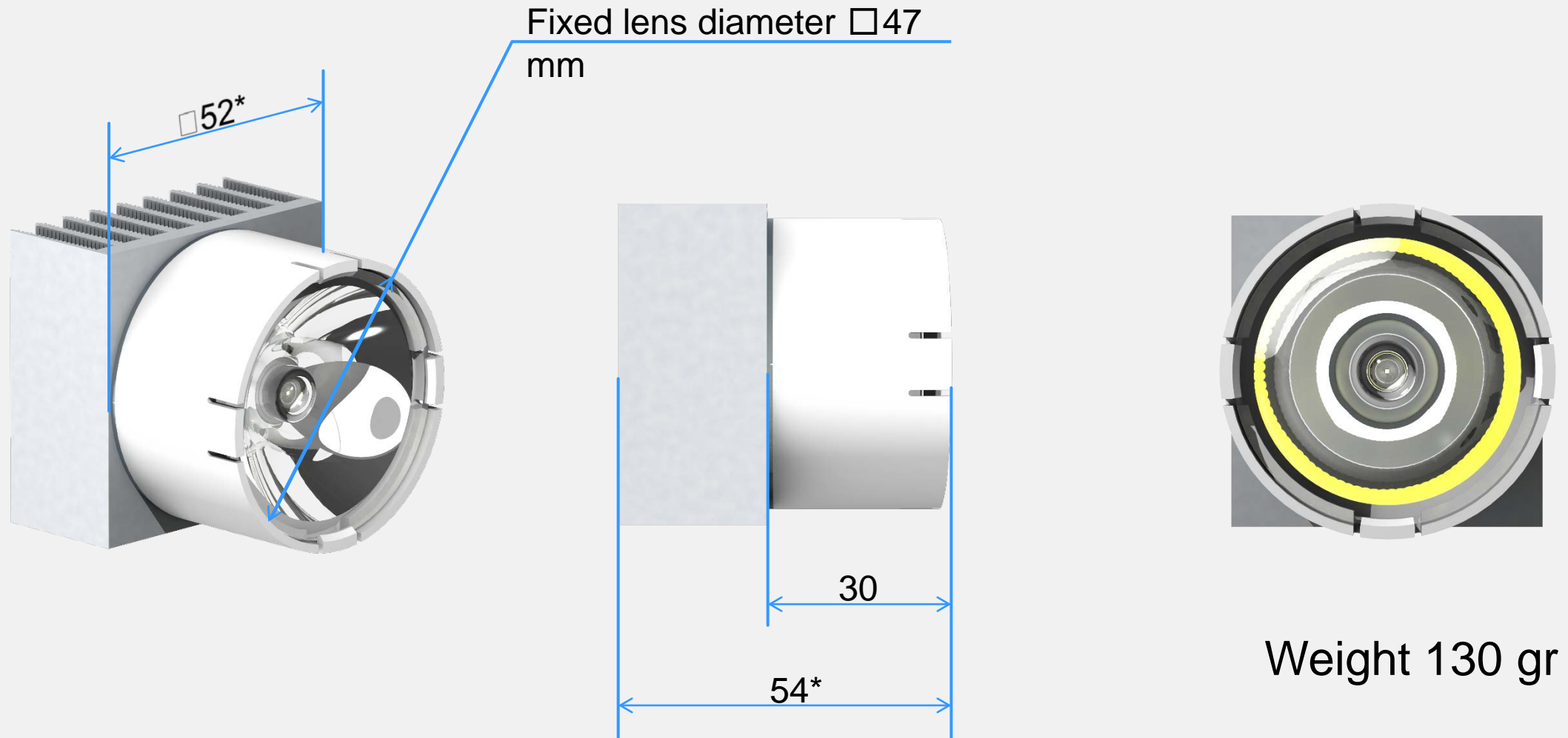
LED driving beam modules Lossew Lamp Far

# Driving-beam modules series LY\_A



- Lens production has been launched
- Product launch within 3 months
- Available samples
- Similar dimensions for A and B classes according to UN ECE Regulation 112r3
- Possibility of double modules creation

# Dimensions and weight



\*Dimensions can be altered according to the customer's requirements

## Test results of driving-beam modules Lossew Lamp Far LY1A

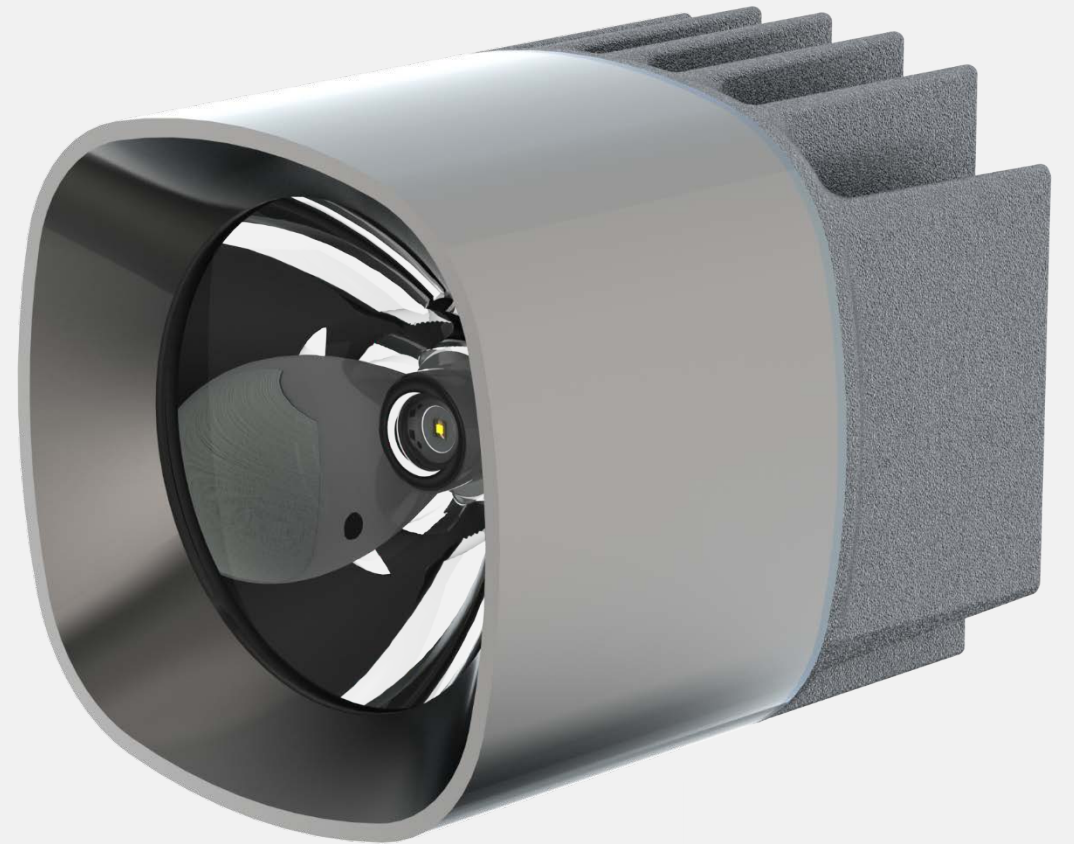
		<b>Class A headlamp</b>	<b>Class B headlamp</b>	<b>LY1A04R112A</b>	<b>LY1A08R112 B</b>
Test point	Angular coordinates, Degrees	Minimum required luminous intensity, cd UN ECE Regulation 112		Laboratory test results, cd*	
$I_{\max}$		27 000	40 500	38 500	53 920
H-5L	0,0; 5,0 L	3 400	5 100	3 100**	4 265**
H-2.5L	0,0; 2,5 L	13 500	20 300	18 400	21 289
H-2.5R	0,0; 2,5 R	13 500	20 300	19 800	25 040
H-5R	0,0; 5,0 R	3 400	5 100	4 100	5 411

\*Measurements were made in the laboratory of «Avtosvet»

\*\*Complies if used together with passing-beam

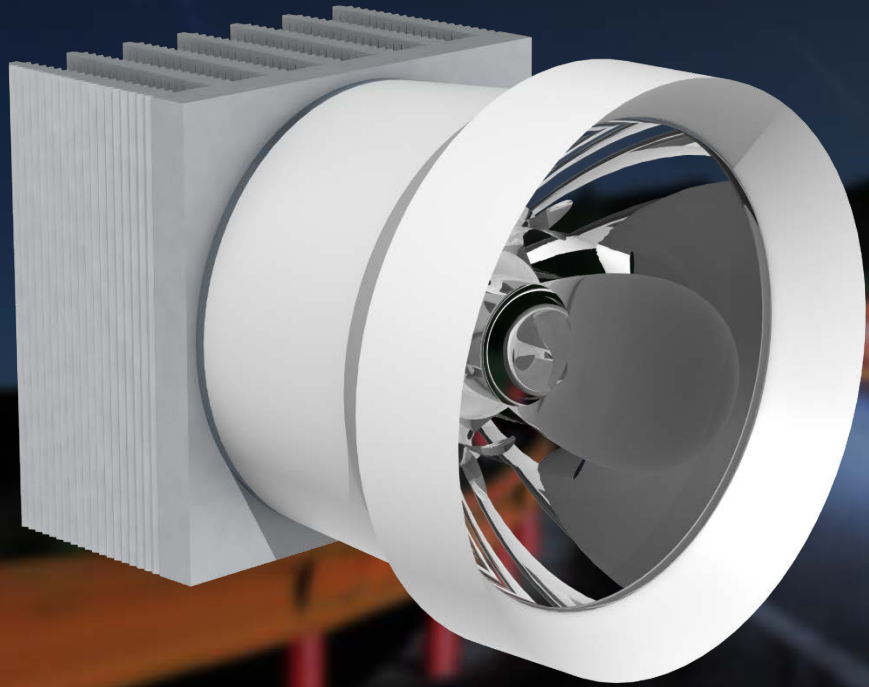
# Model variation and prices

Model variation	Power, W	Luminous flux, Lm	Price*
LY1A04R112 A	3,9	480	11,5 €
LY1A08R112 B	7,6	760	17,5 €



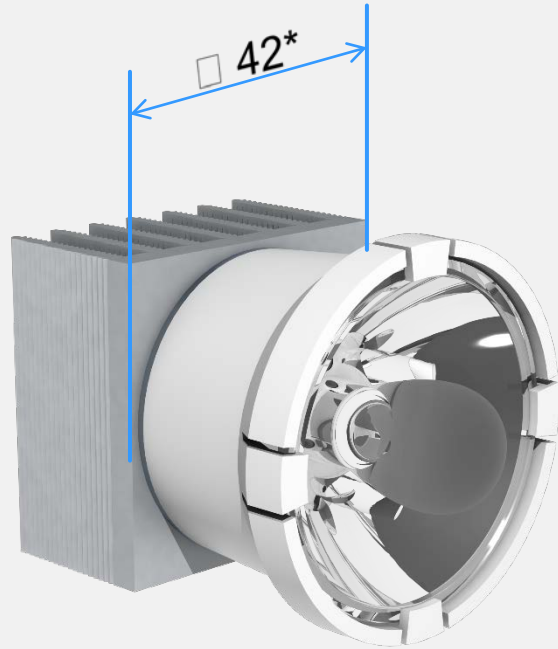
\*Price for annual purchase of not less than 40 000 items.

# Driving-beam modules series LY\_B

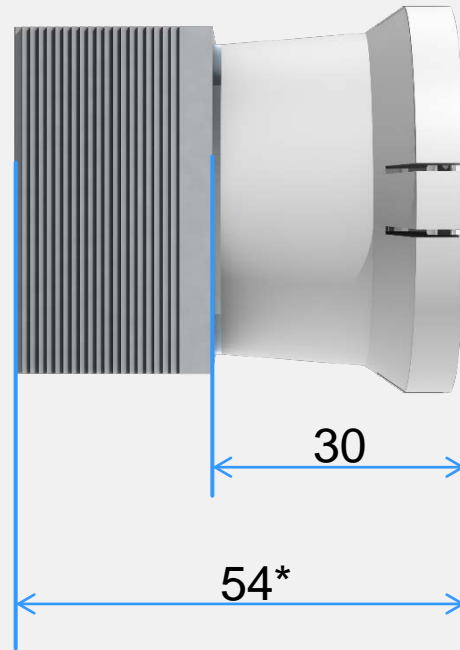


- Individual project design
- Production launch within 6 months
- Similar dimensions for A and B classes according to UN ECE Regulation 112r3
- Possibility of double modules creation

# Dimensions and weight

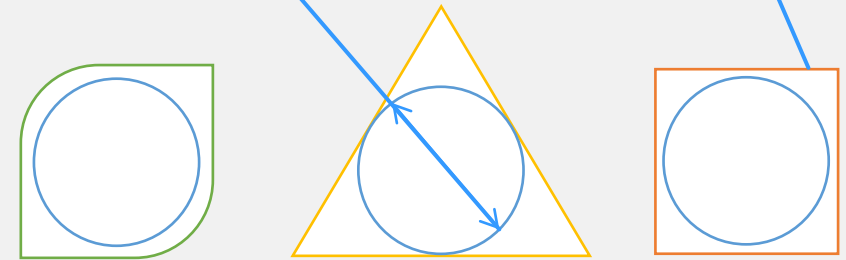


Weight 100 gr



Minimum inscribed diameter  $\square$  38 mm

Various lens profile can be produced



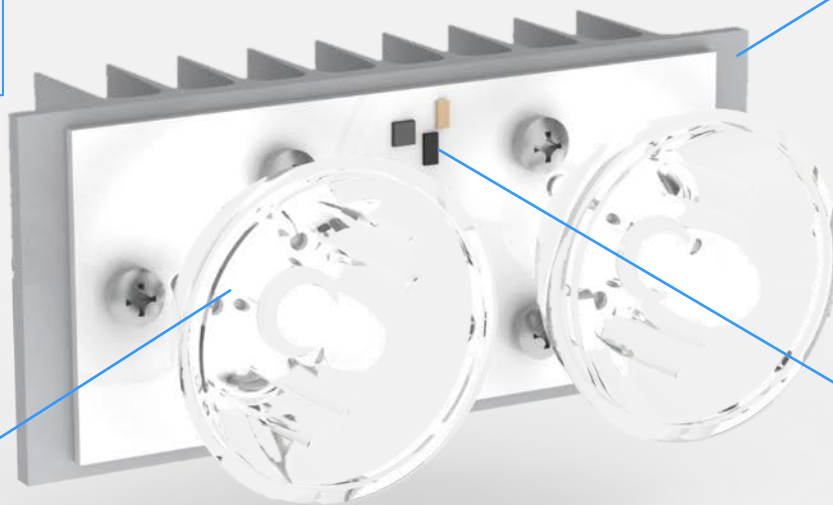
Lens production according to the individual customer's requirements

\*Dimensions can be altered according to the customer's requirements

# Driving-beam double module LY2B

- Power from 5 W
- Luminous flux more than 700 Lm
- Efficiency more than 92 %
- Weight 160 gr
- L\*W\*H 100\*54\*44 mm
- Service life not less than 25 000 hours

Radiator made of aluminium alloy with high heat conductivity



Produced by injection molding  
Light transmittance more than 92 %  
Does not require surface modification

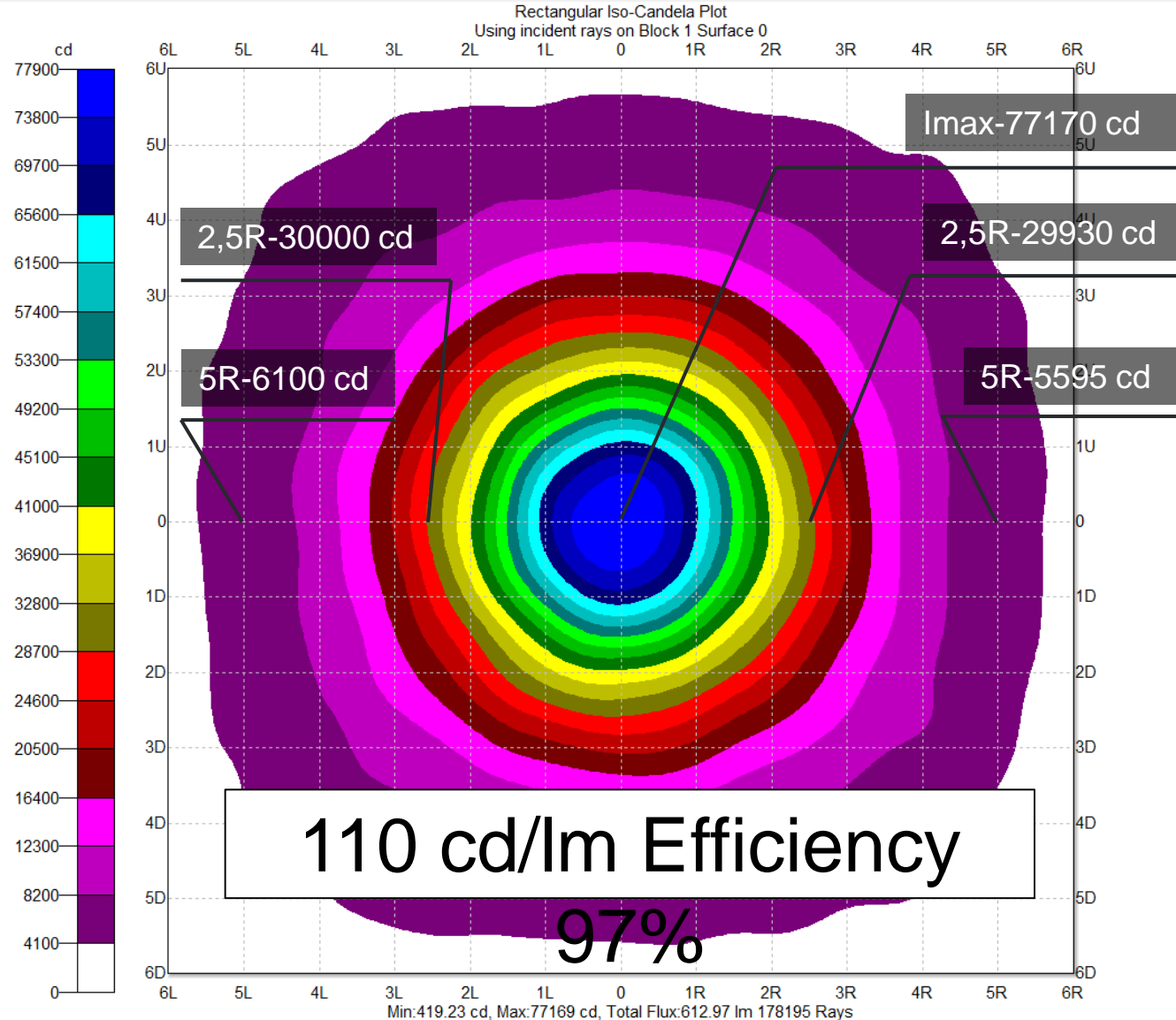
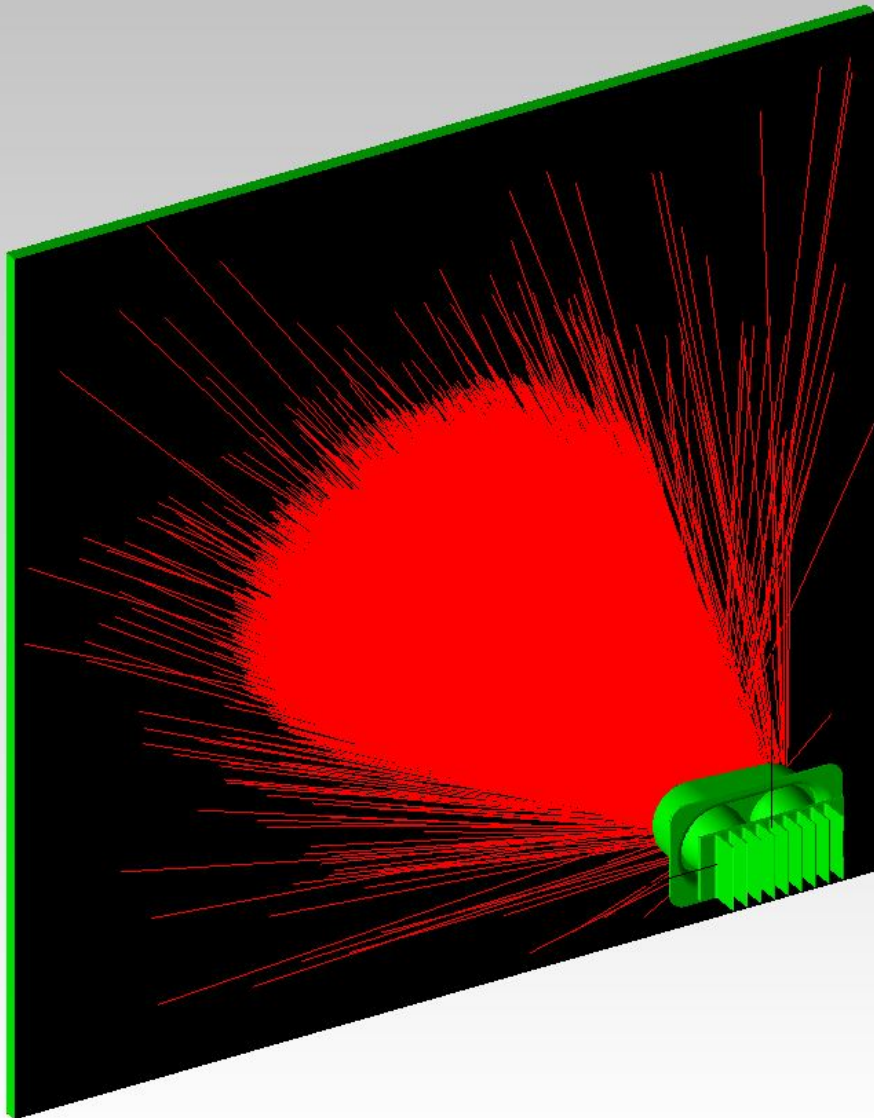
Impulse driver  
Input voltage 12 V  
All electronic components are solid  
Efficiency 90 %. AEC-Q101

Localization of production in Russia more than 75 %





# Computer simulation of driving-beam module LY2B05R112B



## Test results of driving-beam modules Lossew Lamp Far LY\_B

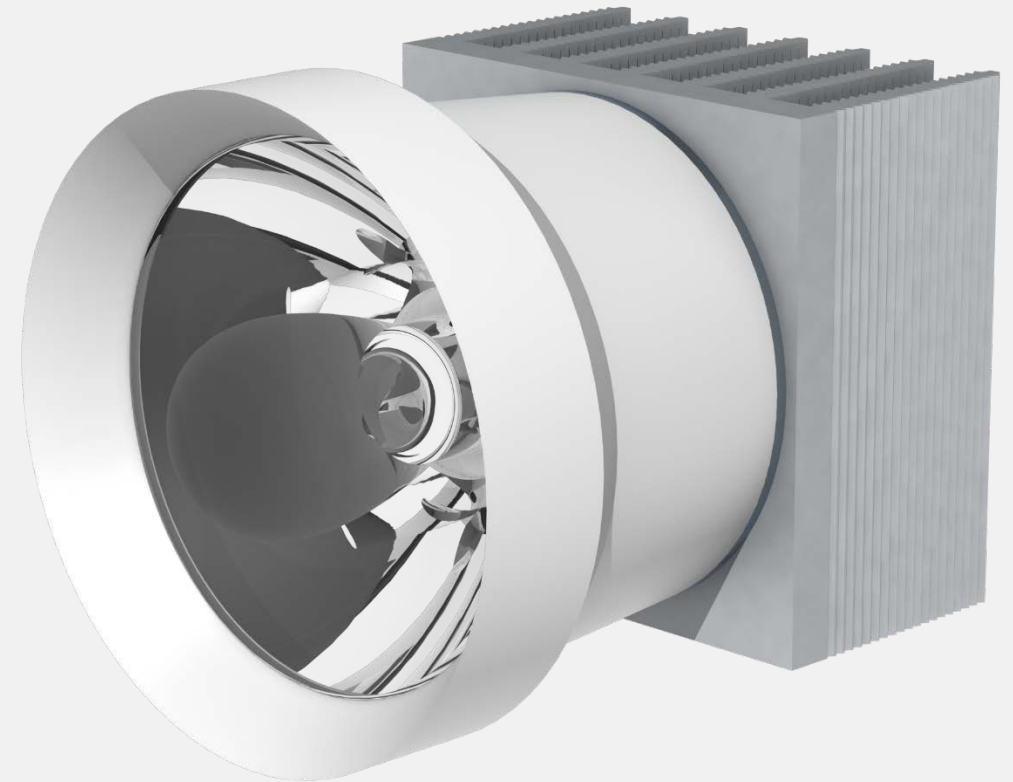
		<b>Class A headlamp</b>	<b>Class B headlam p</b>	<b>LY1B03R112 A</b>	<b>LY1B06R112 B</b>	<b>LY2B05R112 B</b>	<b>LY2B08R112 B</b>
Test point	Angular coordinate s, Degrees	Minimum required luminous intensity, cd		Computer simulation results, cd*			
$I_{\max}$		27 000	40 500	43 320	66 650	77 170	110 150
H-5L	0,0; 5,0 L	3 400	5 100	3 495	5 360	6 100	8 710
H-2.5L	0,0; 2,5 L	13 500	20 300	16 660	25 630	30 000	42 860
H-2.5R	0,0; 2,5 R	13 500	20 300	16 500	25 430	29 930	42 720
H-5R	0,0; 5,0 R	3 400	5 100	3 130**	4 770**	5 595	7 980
<b>Driving-beam range (1 lux)</b>				<b>300 meters</b>	<b>370 meters</b>	<b>400 meters</b>	<b>490 meters</b>

\*Measurements were made with the help of optical engineering software program TracePro

\*\*Complies if used together with passing-beam

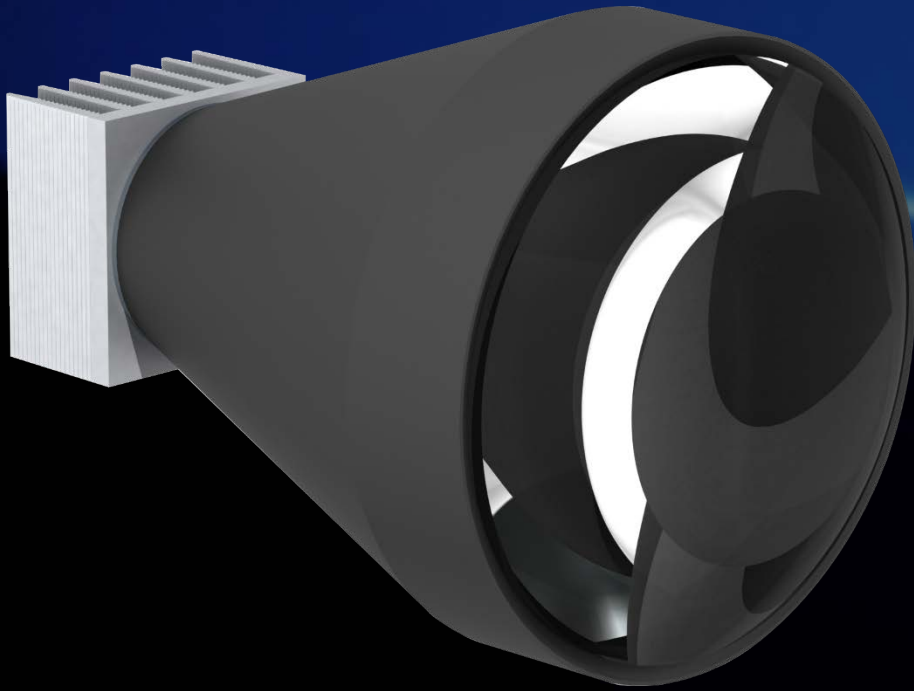
# Model variations and prices

Model variation	Power, W	Luminous flux, Lm	Price*
LY1B03R112A	2,9	390	7 €
LY1B06R112B	6	600	8,5 €
LY2B05R112B	5	700	15 €
LY2B08R112B	8,2	1000	18 €



\*Prices for annual purchase of not less than 40 000 items

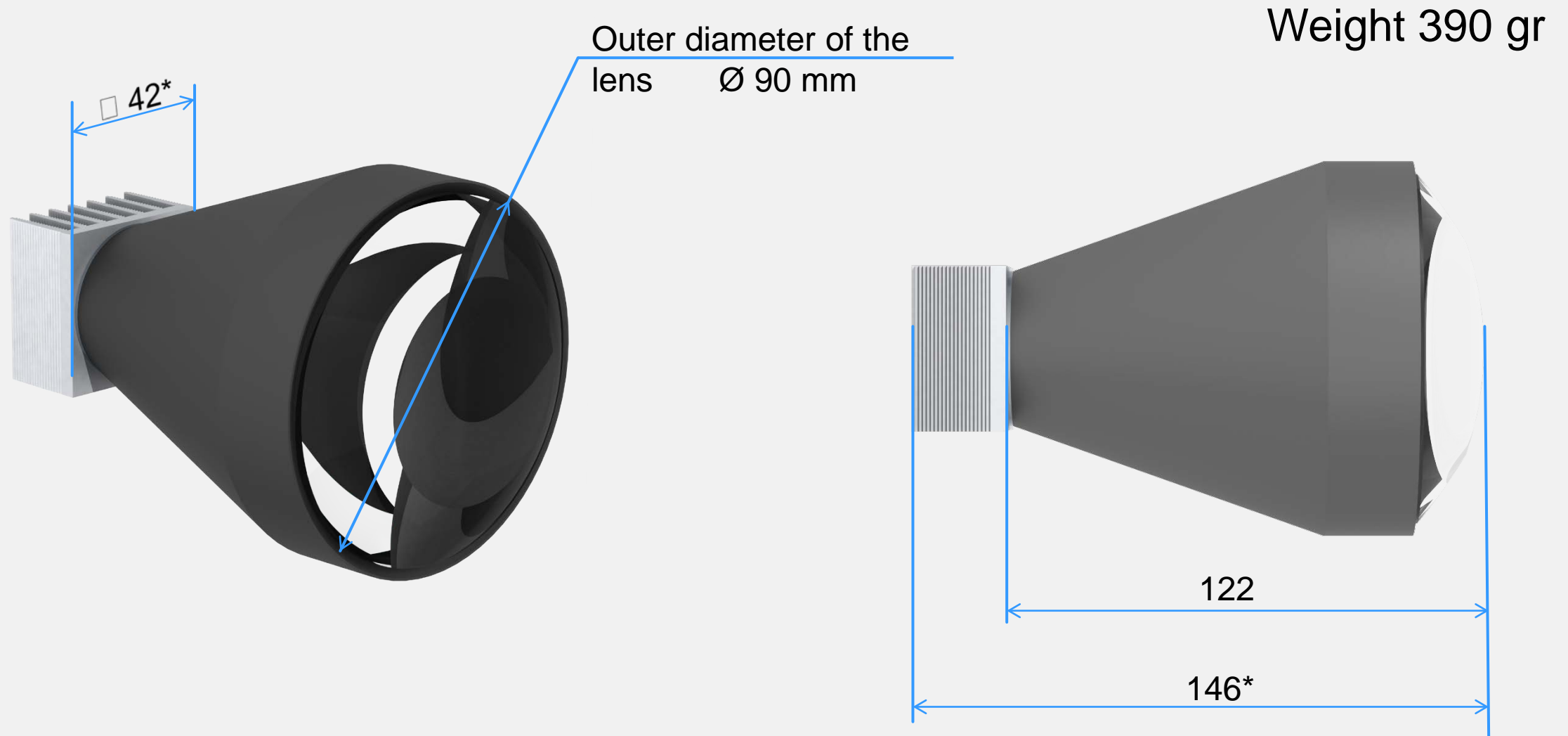
# LED extra-long-range driving-beam modules series LY\_C



- Has the range of laser driving-beam but with much less power
- Creates a light corridor. Secondary luminosity angle  $1,4^{\circ}$
- Luminous intensity of one module more than 140 000 cd with power 2 W
- Absence of fire hazard in case of an accident
- Luminous intensity can be changed depending on the driving situation
- Used together with the series LY\_B\*

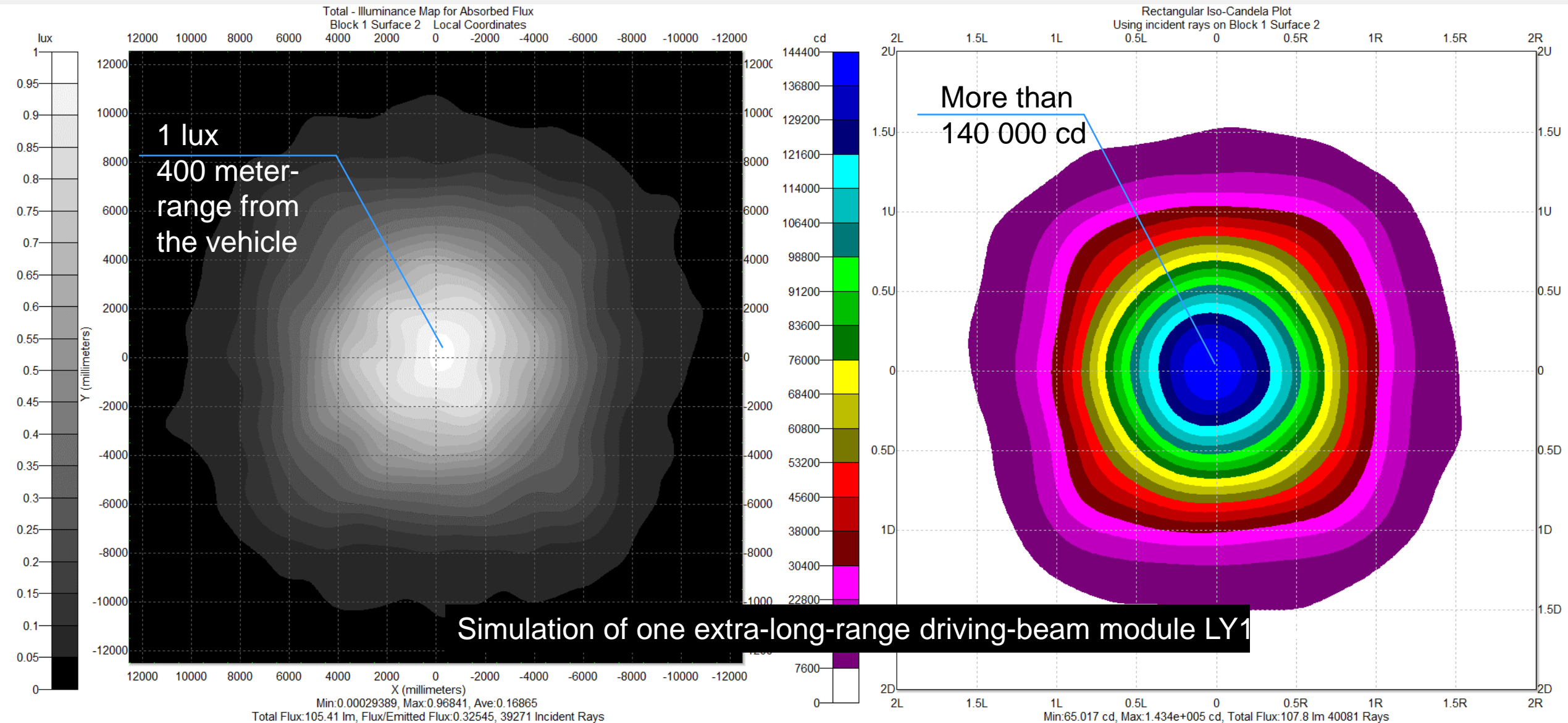
\* Does not comply with UN ECE Regulation 112 if used alone

# Dimensions and weight

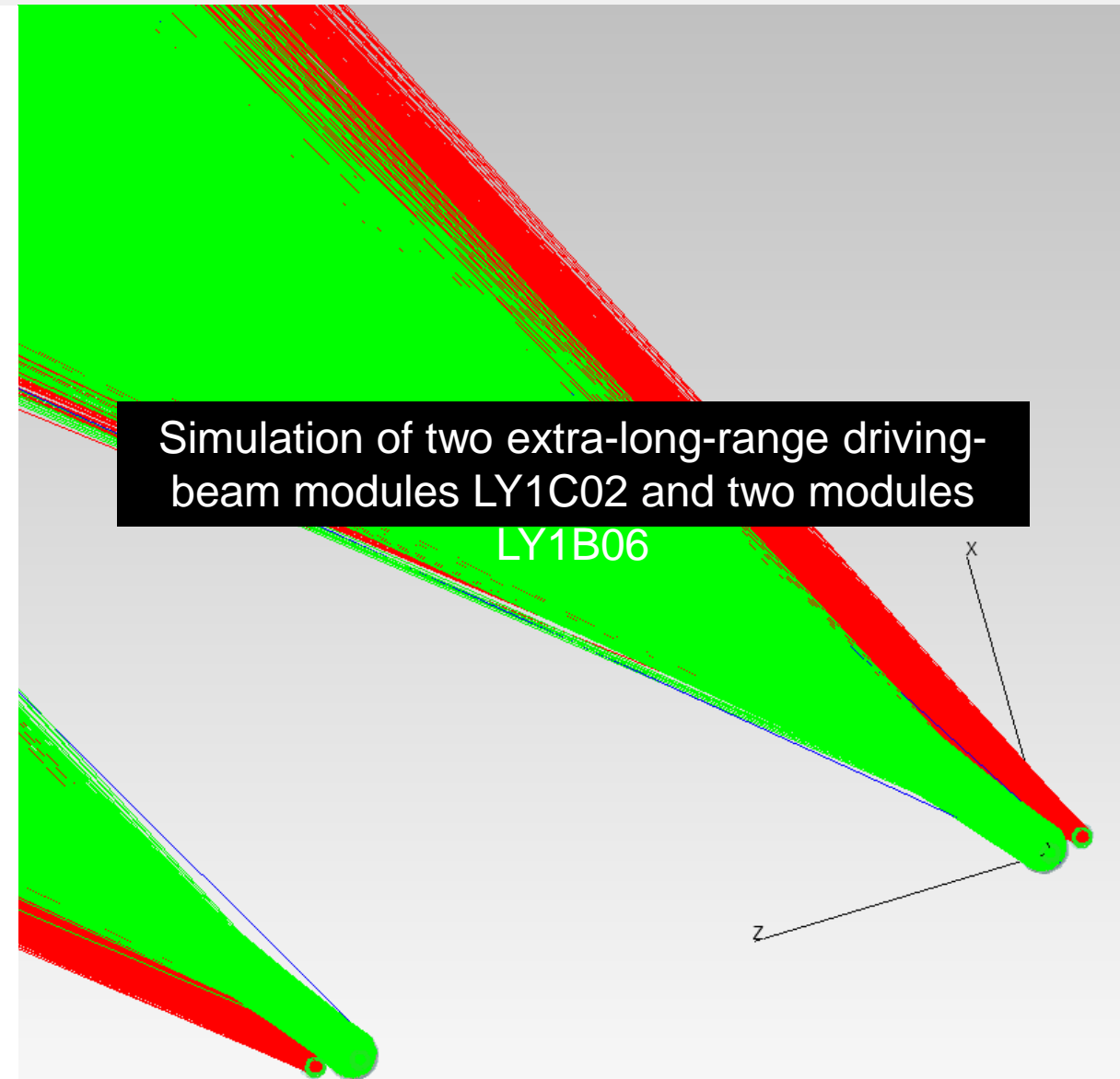
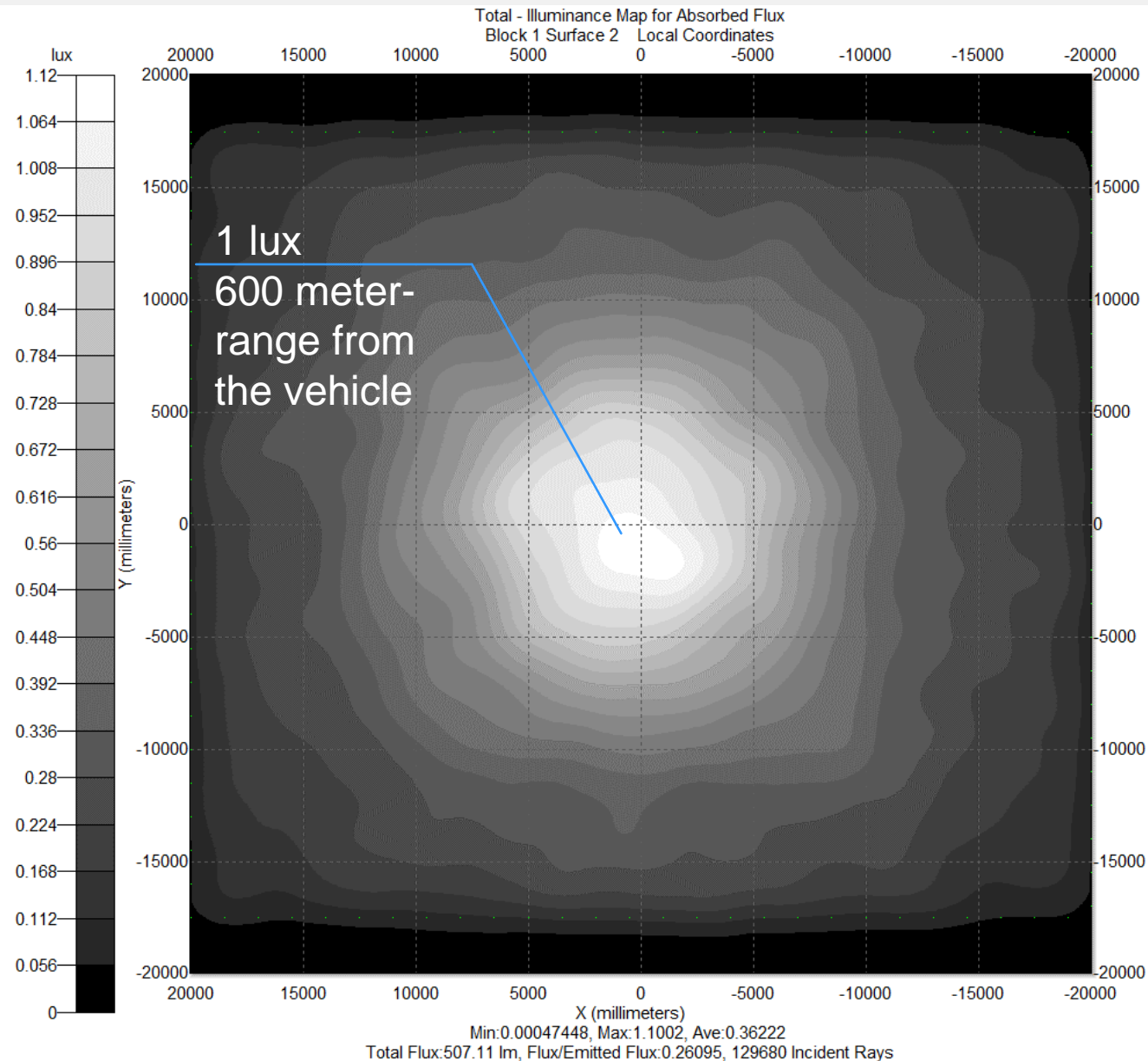


\*Dimensions can be altered according to the customer's requirements

# Range 400 meters with power 2 W

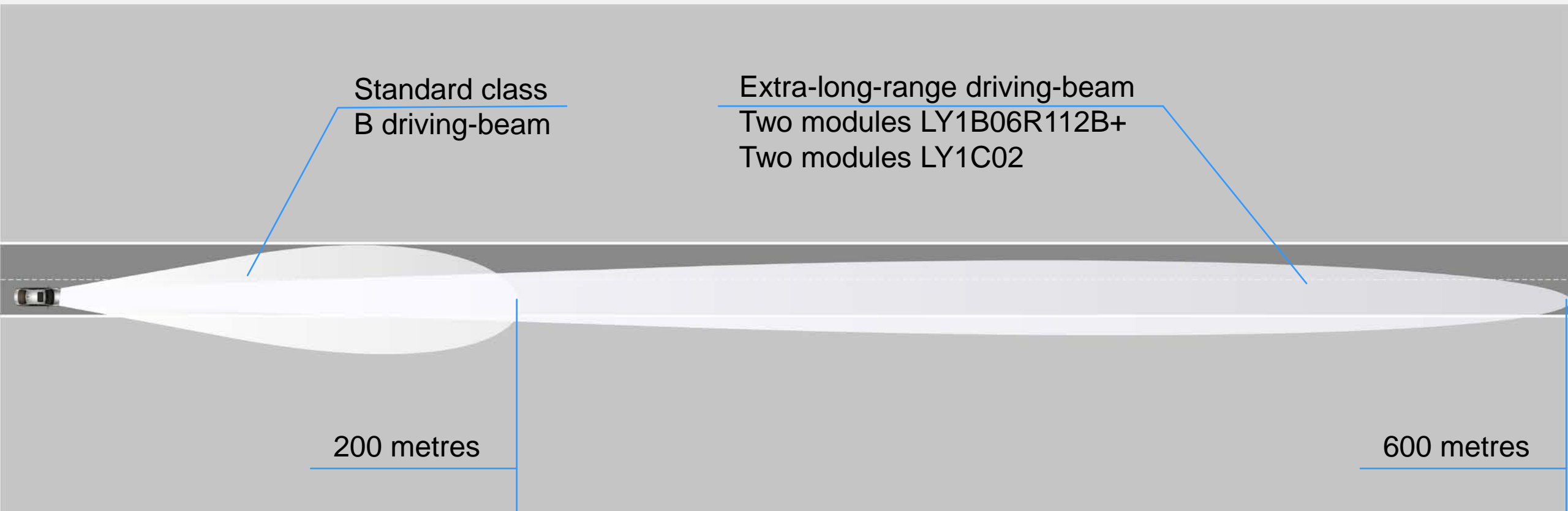


# Range 600 meters with power 16 W

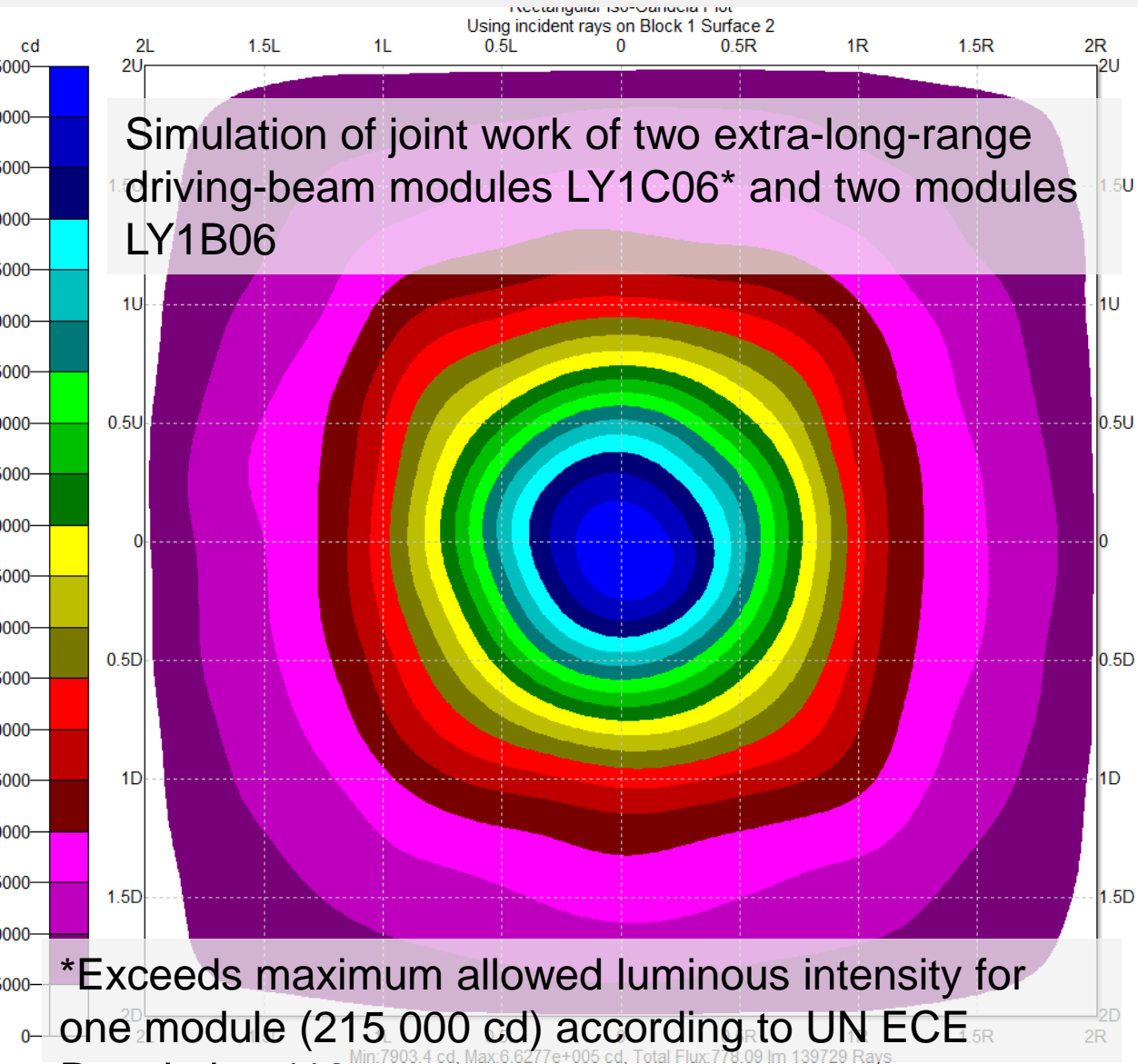
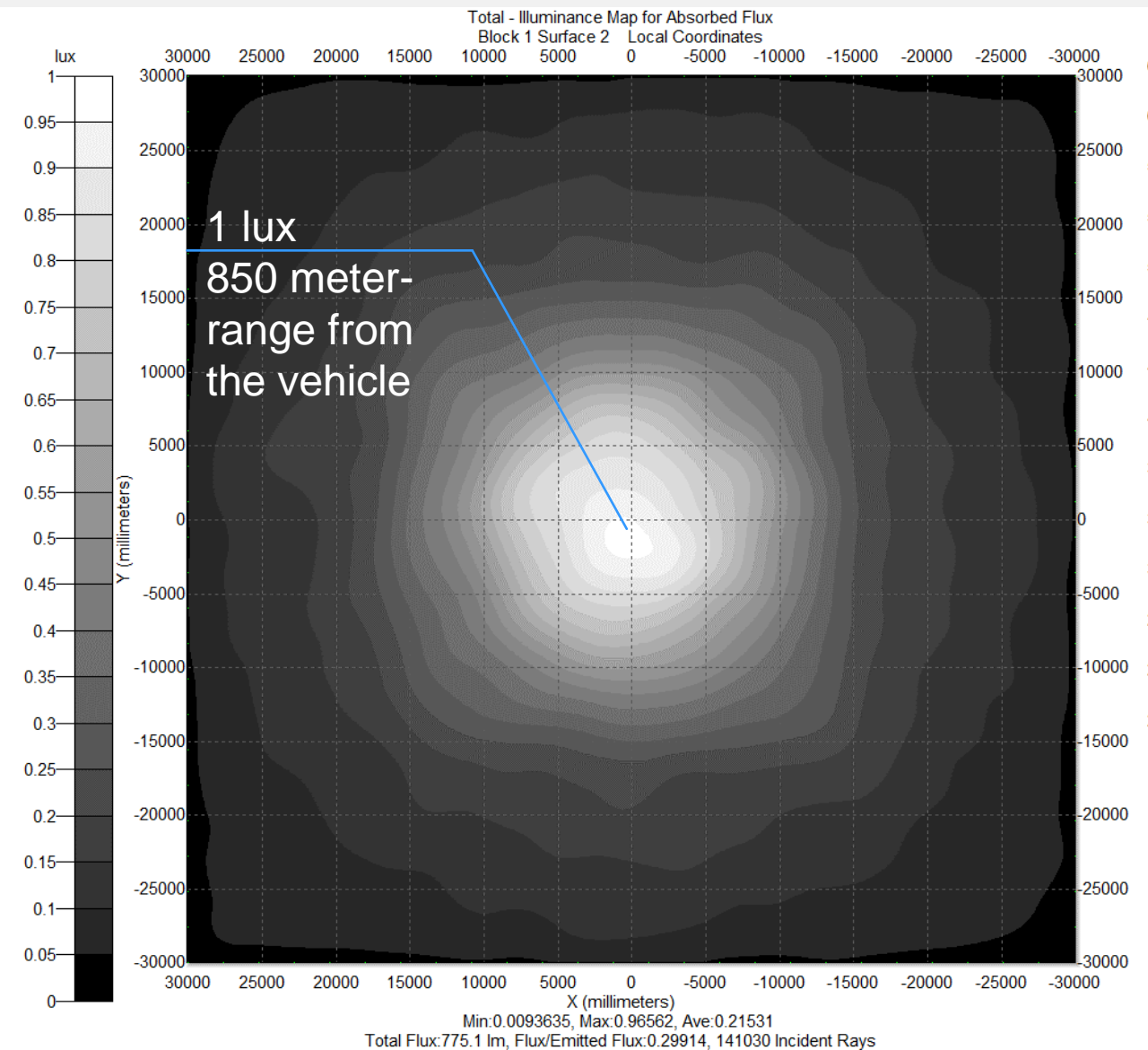




# Range 600 meters with power 16 W

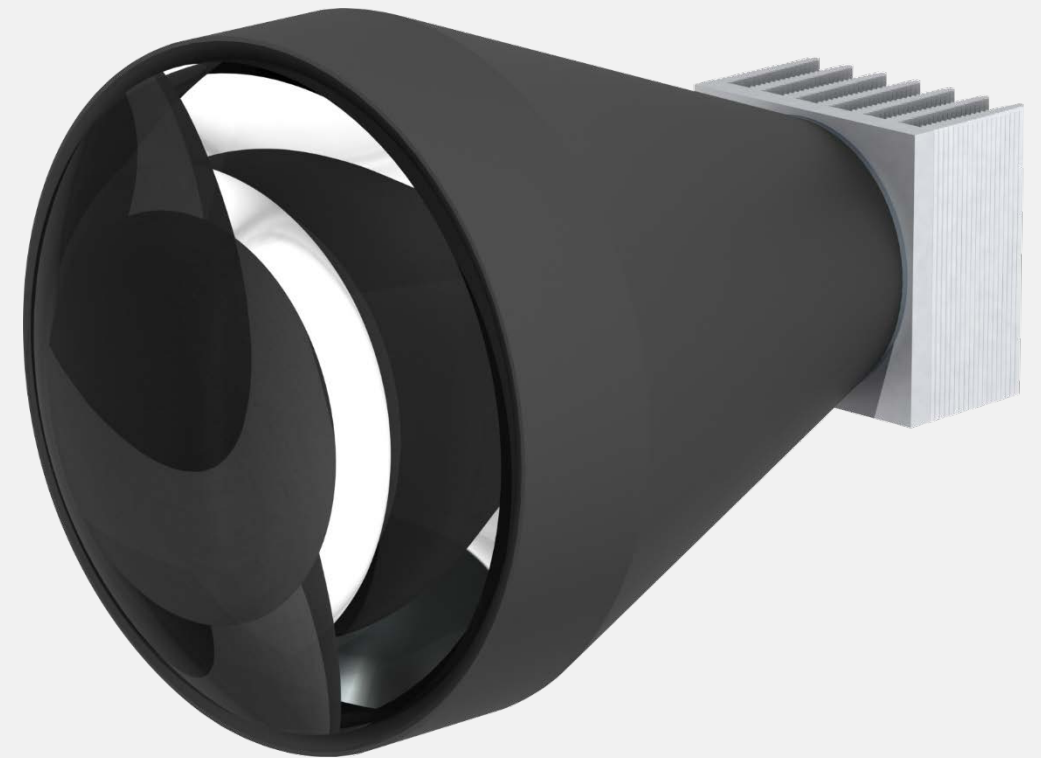


# Range 850 meters with power 24 W



# Model variations and price

Model variation	Power, W	Luminous flux, Lm	Price*
LY1C02	2	300	40 €
LY1C06**	6	620	45 €



\* Prices for annual purchase of not less than 40 000 items

\*\* Exceeds existing norms

The logo consists of a stylized white square with a smaller square inside it, which contains a circle. This is followed by the word "Lossew" in a bold, white, sans-serif font. The letter 'L' is significantly larger than the other letters. The background is black with a large, faint, grey watermark of the word "Lossew" behind the main text.

# Lossew

NPP Losev, Russia, Innovation Center Skolkovo  
lossew.com info@lossew.com +7 (495) 432-20-72

Lossew Lamp 2019